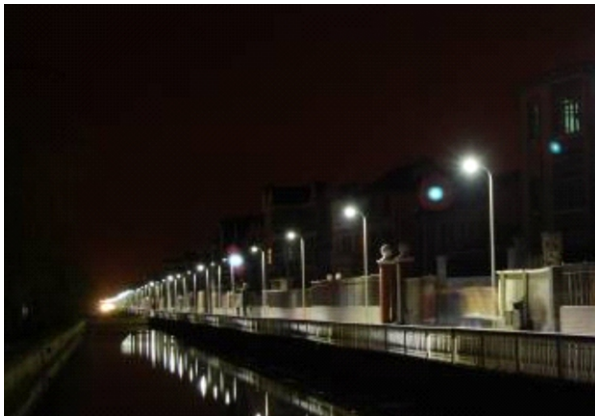


CO820 Rectangle Area Lighting



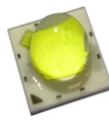
DLC LISTED CE ETL



Features

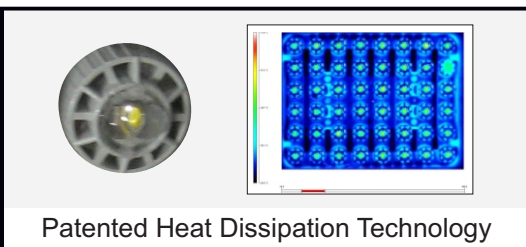
- Nichia 219 high power point source white LED technology
- Patented individual LED heat-dissipation technology eliminates heat rapidly and enhances overall LED performance
- Custom designed lenses and light pattern engineered to yield maximum light distribution
- Removable LED plate
- Long life span
- Detachable weatherproof power supply
- IP65/NEMA 4X environmental fixture design
- Lightweight pole/ceiling mount
- Energy-saving - requires 75%-90% less power than typical HID lamps
- Optional hardware/software dimming control

Exclusive Features



Applications:

- Parking Lots / Parking Garages / Area Lighting
- C-Store / Retail / Warehouse



Mounting Options



Wall Mount



Ceiling Mount

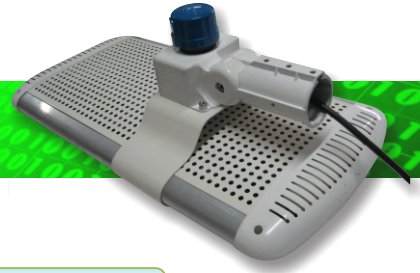


Pole Mount

Wattage Replacement Chart

Optec LED Model	System Watts	Replacement Wattage (Typical System Wattage)
CO820 40W	40 watts	70W MV (88W) 40W Induction (45W) 70W MV (88W) 40W Induction (45W)
CO820 50W	53 watts	100W HPS (130W)
CO820 60W	67 watts	150W HPS (190W) 175W MH (208W)
CO820 80W	80 watts	150W HPS (190W) 175W MH (208W)
CO820 120W	120 watts	250W HPS (295W) 250W MH (295W)
CO820 170W	173 watts	400W MH (465W)
CO820 240W	239 watts	1000W MH (1160W)

Actual wattage equivalent will depend on specific application characteristics, design criteria and distribution type.



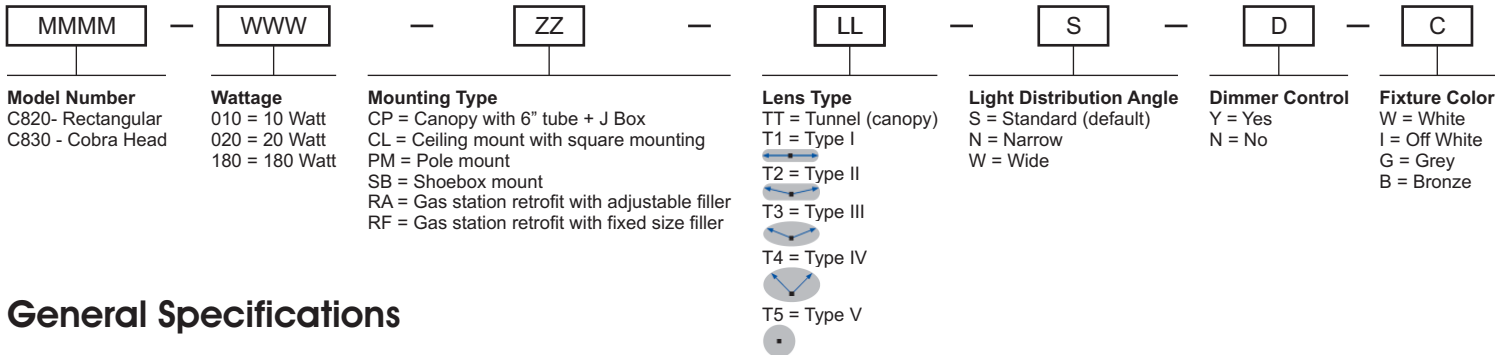
CO820 Rectangle Area Lighting



DLC LISTED



Ordering Information



General Specifications

LED Type	Nichia 219	Enclosure Protection	IP65
Emitting Color	Pure White	Housing Material	Aluminum
Luminary Efficiency	90 Lm/W UP	Certifications	ETL
LED Lifetime	50,000 hours	Operation Voltage	95v to 265v, AC
Color Temperature	5,000K +/- 500K	Power Efficiency	90%
Temperature Range	-30C to 55C	Humidity Range	10% to 98% RH

CO820 Technical Specifications

Model	Dimensions (in)	Weight (lbs.)	# of Diodes	Lumens	Input Power
CO820-40W	16.3" x 11.0" x 7.1"	9.9	30	3,600	40 watts
CO820-50W	16.3" x 12.4" x 7.1"	12.1	40	4,800	53 watts
CO820-70W	16.3" x 15.2" x 7.1"	16.5	50	6,000	67 watts
CO820-80W	16.3" x 16.7" x 7.1"	17.6	60	7,200	80 watts
CO820-90W	16.3" x 18.1" x 7.1"	19.9	70	8,400	93 watts
CO820-110W	16.3" x 20.9" x 7.1"	22.2	80	9,500	106 watts
CO820-120W	16.3" x 22.4" x 7.1"	24.2	90	10,800	120 watts
CO820-130W	16.3" x 23.8" x 7.1"	25.6	100	12,000	133 watts
CO820-150W	16.3" x 26.5" x 7.1"	28.6	110	13,100	146 watts
CO820-160W	16.3" x 27.9" x 7.1"	30.8	120	14,400	160 watts
CO820-170W	16.3" x 29.3" x 7.1"	33.0	130	15,600	173 watts
CO820-190W	16.3" x 29.3" x 7.1"	35.2	140	16,700	186 watts
CO820-200W	16.3" x 29.3" x 7.1"	37.4	150	18,000	200 watts
CO820-210W	16.3" x 29.3" x 7.1"	39.8	160	19,200	213 watts
CO820-240W	16.3" x 29.3" x 7.1"	41.8	180	21,500	239 watts