

CO820 19.5" Canopy Retrofit Lighting



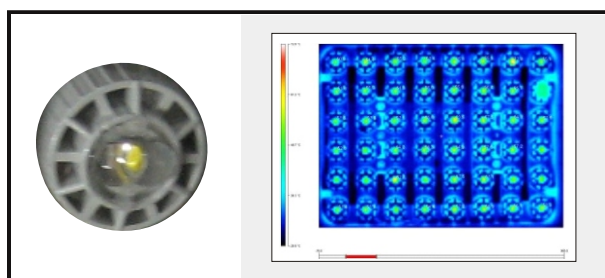
Features

- Patented individual LED heat-dissipation technology eliminates heat rapidly and enhances overall LED performance
- Custom designed lenses and light pattern engineered to yield maximum light distribution
- Removable LED plate
- Long life span
- Detachable weatherproof power supply
- IP65/NEMA 4X environmental fixture design
- Lightweight ceiling mount
- Energy-saving - requires 75%-90% less power than typical HID lamps
- Optional hardware/software dimming control

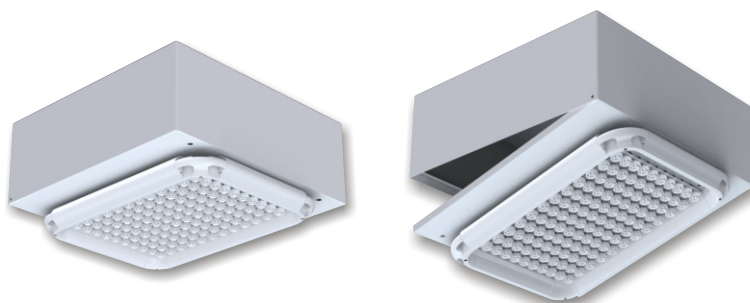
Applications:

- Canopies / Parking Garages / Soffit Lighting
- C-Store / Retail / Warehouse / Industrial

Patent Pending Heat Dissipation Technology



Easy Service Access

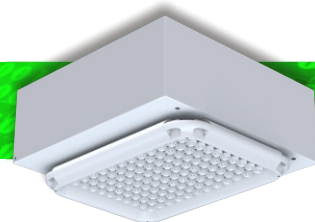


Enclosure hinges for quick access to all components

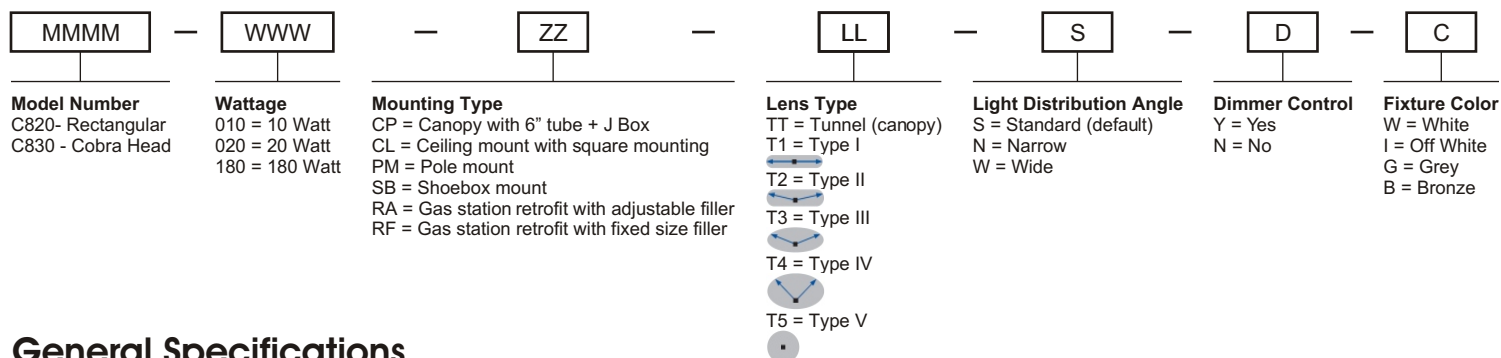
Wattage Replacement Chart

Optec LED Model	System Watts	Replacement Wattage (Typical System Wattage)
CO820-70W	70 watts	150W HPS (190W) 175W MH (208W)
CO820-90W	90 watts	150W HPS (190W) 175W MH (208W)
CO820-120W	120 watts	250W HPS (295W) 250W MH (295W)

Actual wattage equivalent will depend on specific application characteristics, design criteria and distribution type.



CO820 19.5" Canopy Retrofit Lighting



General Specifications

LED Type	Nichia	Enclosure Protection	IP65
Emitting Color	Pure White	Housing Material	Aluminum
Luminosity Efficiency	80 Lm/W UP	Certifications	ETL
LED Lifetime	50,000 hours	Operation Voltage	95v to 265v, AC
Color Temperature	4800K to 5500K	Power Efficiency	90%
Temperature Range	-30C to 55C	Humidity Range	10% to 98% RH

CO820 Technical Specifications

Model	Dimensions (in)	Weight (lbs.)	Lumens	Input Power
CO820-70W	16.3 x 15.2 x 7.1	16.5	5,600	71 watts
CO820-90W	16.3 x 18.1 x 7.1	19.9	7,200	90 watts
CO820-120W	16.3 x 12.4 x 7.1	24.2	9,600	120 watts